

FCGR2B Antibody (C-term)
Affinity Purified Rabbit Polyclonal Antibody (Pab)
Catalog # AP13987b**Specification**

FCGR2B Antibody (C-term) - Product Information

| | |
|-------------------|---|
| Application | WB,E |
| Primary Accession | P31994 |
| Other Accession | NP_003992.3 , NP_001002273.1 , NP_001177757.1 , NP_001002274.1 |
| Reactivity | Human |
| Host | Rabbit |
| Clonality | Polyclonal |
| Isotype | Rabbit IgG |
| Calculated MW | 34044 |
| Antigen Region | 250-279 |

FCGR2B Antibody (C-term) - Additional Information**Gene ID** 2213**Other Names**

Low affinity immunoglobulin gamma Fc region receptor II-b, IgG Fc receptor II-b, CDw32, Fc-gamma RII-b, Fc-gamma-RIIb, FcRII-b, CD32, FCGR2B, CD32, FCG2, IGFR2

Target/Specificity

This FCGR2B antibody is generated from rabbits immunized with a KLH conjugated synthetic peptide between 250-279 amino acids from the C-terminal region of human FCGR2B.

Dilution

WB~~1:1000

E~~Use at an assay dependent concentration.

Format

Purified polyclonal antibody supplied in PBS with 0.09% (W/V) sodium azide. This antibody is purified through a protein A column, followed by peptide affinity purification.

Storage

Maintain refrigerated at 2-8°C for up to 2 weeks. For long term storage store at -20°C in small aliquots to prevent freeze-thaw cycles.

Precautions

FCGR2B Antibody (C-term) is for research use only and not for use in diagnostic or therapeutic procedures.

FCGR2B Antibody (C-term) - Protein Information**Name** FCGR2B

Synonyms CD32, FCG2, IGFR2

Function Receptor for the Fc region of complexed or aggregated immunoglobulins gamma. Low affinity receptor. Involved in a variety of effector and regulatory functions such as phagocytosis of immune complexes and modulation of antibody production by B-cells. Binding to this receptor results in down-modulation of previous state of cell activation triggered via antigen receptors on B-cells (BCR), T-cells (TCR) or via another Fc receptor. Isoform IIB1 fails to mediate endocytosis or phagocytosis. Isoform IIB2 does not trigger phagocytosis.

Cellular Location

Cell membrane; Single-pass type I membrane protein

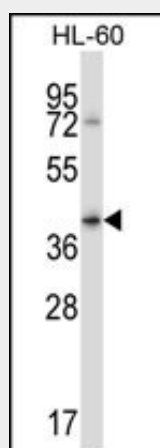
Tissue Location

Is the most broadly distributed Fc-gamma-receptor. Expressed in monocyte, neutrophils, macrophages, basophils, eosinophils, Langerhans cells, B-cells, platelets cells and placenta (endothelial cells). Not detected in natural killer cells

FCGR2B Antibody (C-term) - Protocols

Provided below are standard protocols that you may find useful for product applications.

- [Western Blot](#)
- [Blocking Peptides](#)
- [Dot Blot](#)
- [Immunohistochemistry](#)
- [Immunofluorescence](#)
- [Immunoprecipitation](#)
- [Flow Cytometry](#)
- [Cell Culture](#)

FCGR2B Antibody (C-term) - Images

FCGR2B Antibody (C-term) (Cat. #AP13987b) western blot analysis in HL-60 cell line lysates (35ug/lane). This demonstrates the FCGR2B antibody detected the FCGR2B protein (arrow).

FCGR2B Antibody (C-term) - Background

The protein encoded by this gene is a low affinity receptor for the Fc region of immunoglobulin gamma complexes. The encoded protein is involved in the phagocytosis of immune complexes

and in the regulation of antibody production by B-cells. Variations in this gene may increase susceptibility to systemic lupus erythematosus (SLE). Several transcript variants encoding different isoforms have been found for this gene.

FCGR2B Antibody (C-term) - References

Prokopec, K.E., et al. Clin. Immunol. 137(3):322-329(2010)
Silva, L.K., et al. Eur. J. Hum. Genet. 18(11):1221-1227(2010)
Zhang, C.Y., et al. J. Biol. Chem. 285(44):34250-34258(2010)
Niederer, H.A., et al. Hum. Mol. Genet. 19(16):3282-3294(2010)
Guilabert, A., et al. J. Am. Acad. Dermatol. 63(1):161-163(2010)